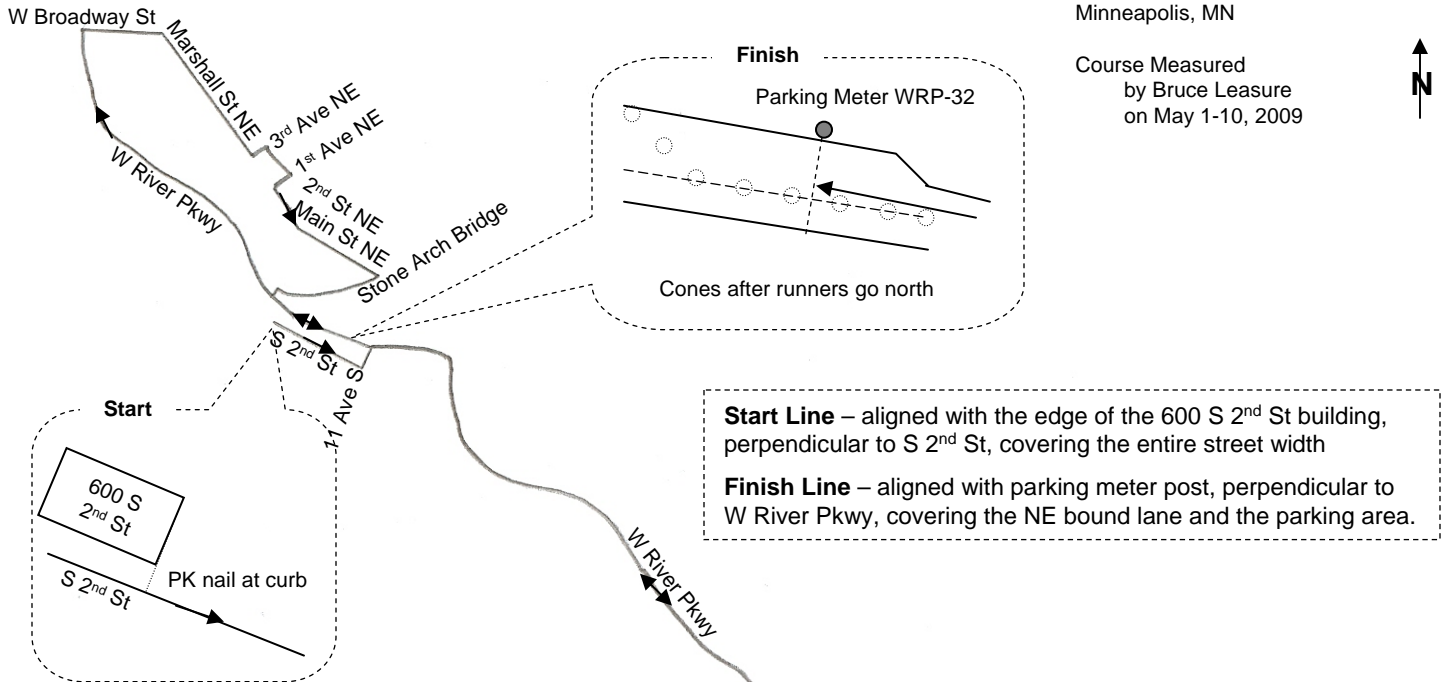


Course Measured  
 by Bruce Leasure  
 on May 1-10, 2009



**Start Line** – aligned with the edge of the 600 S 2<sup>nd</sup> St building, perpendicular to S 2<sup>nd</sup> St, covering the entire street width

**Finish Line** – aligned with parking meter post, perpendicular to W River Pkwy, covering the NE bound lane and the parking area.

**Required Cones**

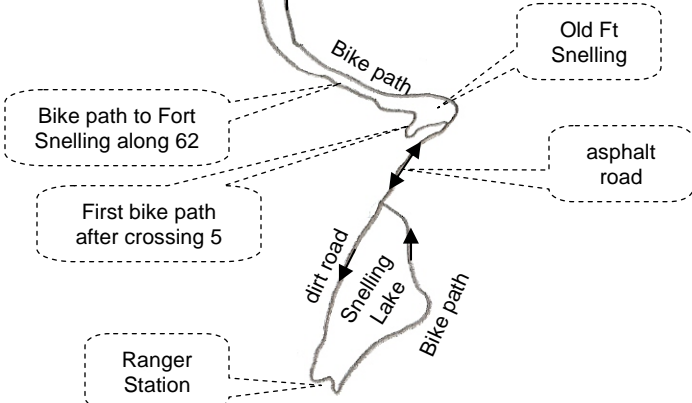
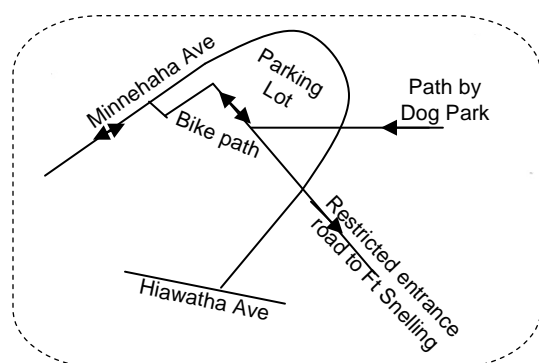
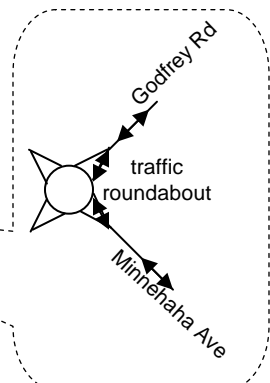
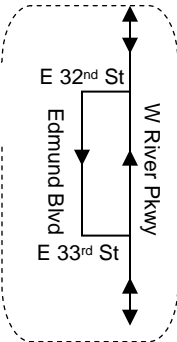
Course from start until just past the Stone Arch Bridge assumes full width of road surface.

W River Pkwy must be coned down the middle from the finish line south, as must Godfrey and Minnehaha. Runners are restricted to the lane that cars traveling in the same direction would take, except at the roundabout. Coning on W River Pkwy from 11th Ave to the Finish must be placed after runners go by on the way north

Course assumes full width of the road surface at the 32<sup>nd</sup>, Edmund, 33<sup>rd</sup> jog.

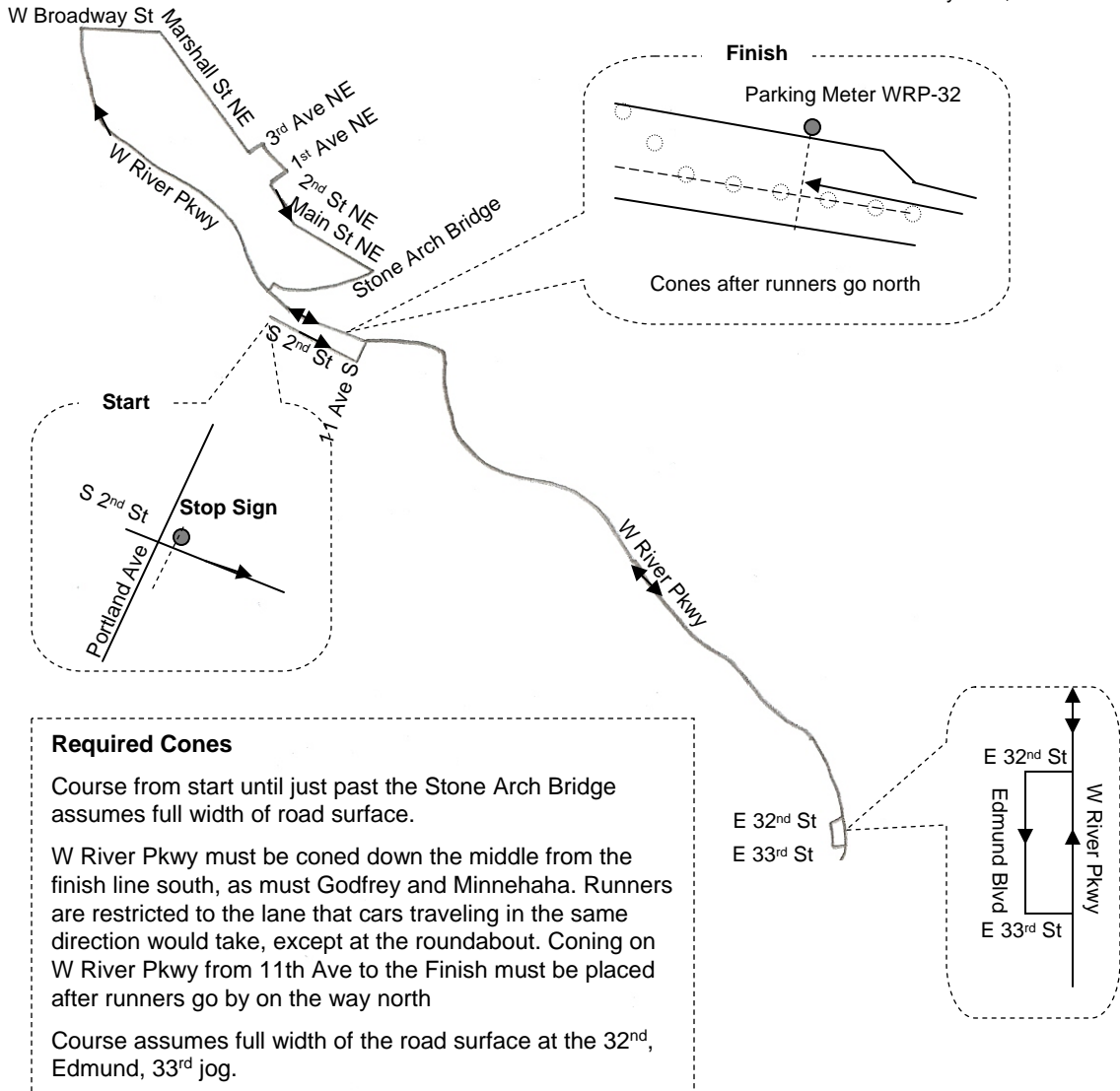
Course assumes full width of road surface on restricted entrance road to Ft Snelling and through Ft Snelling

Coning on two way section north of Snelling Lake creates 2 lanes, each 4' wide, on west side of asphalt road



Bike path to Fort Snelling along 62

First bike path after crossing 5



**Required Cones**

Course from start until just past the Stone Arch Bridge assumes full width of road surface.

W River Pkwy must be coned down the middle from the finish line south, as must Godfrey and Minnehaha. Runners are restricted to the lane that cars traveling in the same direction would take, except at the roundabout. Coning on W River Pkwy from 11th Ave to the Finish must be placed after runners go by on the way north

Course assumes full width of the road surface at the 32<sup>nd</sup>, Edmund, 33<sup>rd</sup> jog.

**Start Line** – aligned with stop sign post, perpendicular to S 2<sup>nd</sup> St, covering the entire street width

**Finish Line** – aligned with parking meter post, perpendicular to W River Pkwy, covering the NE bound lane and the parking area.